

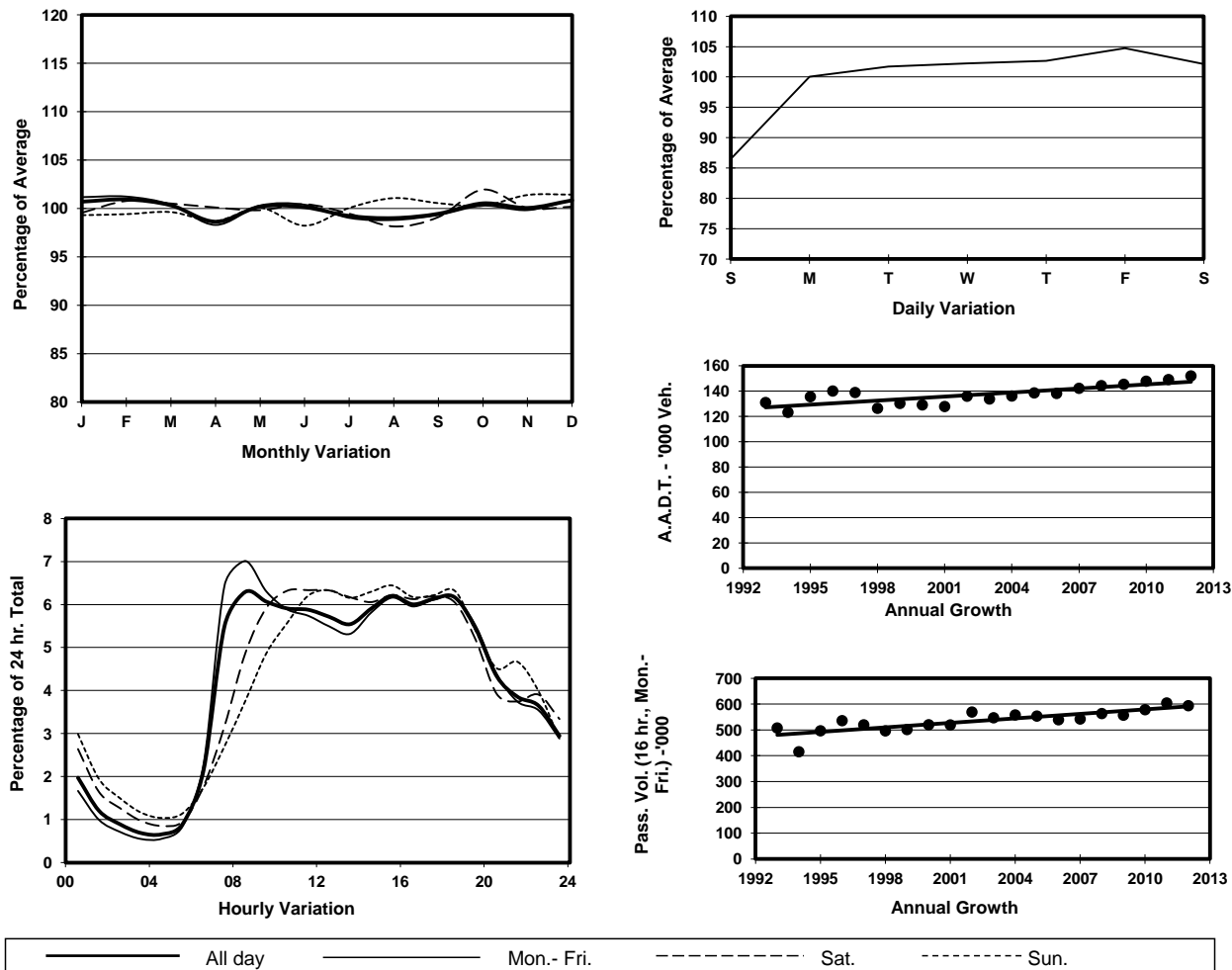
YEAR 2012

Location Hong Kong External Cordon(Boundary between the Northern Part and Southern Part of Hong Kong Island)

Stations on Cordon/Screenline

1004, 1021, 2201, 2202, 2206, 2401 and 2407

## 1. TRAFFIC FLOW VARIATION AND GROWTH



## 2. TRAFFIC CHARACTERISTICS (BY DIRECTION)

Parameter	All - Day	Mon. - Fri.	Sat.	Sun.
<b>SOUTH BOUND</b>				
A.A.D.T.	69890	71730	72280	61910
R 12 / 24 - %	69.3	70	68.4	65.8
R 16 / 24 - %	87.8	88.8	85.7	84.9
AM Peak Hour	0900-1000	0900-1000	0900-1000	0900-1000
One-way flow at AM peak hour	4150	4430	4180	2950
T - % (AM)	-	11.2	-	-
PM Peak Hour	1800-1900	1800-1900	1600-1700	1600-1700
One-way flow at PM peak hour	4120	4300	4590	3840
T - % (PM)	-	6.9	-	-
Prop.of commercial vehicles - 16 hr.	-	11.1	-	-
<b>NORTH BOUND</b>				
A.A.D.T.	82060	84840	84050	70330
R 12 / 24 - %	73.1	74.3	71	68.2
R 16 / 24 - %	89.3	90.2	87.3	86.2
AM Peak Hour	0800-0900	0800-0900	0900-1000	0900-1000
One-way flow at AM peak hour	5620	6550	5080	3490
T - % (AM)	-	8.8	-	-
PM Peak Hour	1700-1800	1700-1800	1700-1800	1800-1900
One-way flow at PM peak hour	5350	5510	5430	4840
T - % (PM)	-	12	-	-
Prop.of commercial vehicles - 16 hr.	-	10.3	-	-

## 3. OTHER INFORMATION AND COMMENT

**Hong Kong External Cordon**  
**Year 2012**

**4. Vehicle classification and occupancy - Monday to Friday**

Time		Class of vehicle									
		Motor Cycle	Private Car	Taxi	Private LB	PLB	Goods veh.		Non Fr. Bus	Fr. Bus	
							Light	M & H		SD	DD
0700-0800	Pro	4.1	40.3	23.7	3.3	6.0	7.1	2.1	7.9	0.4	5.1
	Ocp	1.1	1.5	2.1	8.1	13.2	1.8	1.4	17.8	24.8	60.9
0800-0900 Peak Hour	Pro	2.9	54.0	19.0	1.8	4.1	8.0	2.1	3.9	0.3	3.7
	Ocp	1.0	1.4	2.1	5.3	13.6	1.7	1.4	12.7	24.1	68.0
0900-1000	Pro	2.9	47.6	20.9	1.0	4.3	14.0	2.2	2.5	0.3	4.4
	Ocp	1.1	1.4	2.1	2.4	13.4	1.8	1.3	9.6	16.6	33.2
1000-1100	Pro	2.1	42.7	21.9	1.2	3.9	17.2	3.8	2.3	0.3	4.6
	Ocp	1.1	1.5	2.0	3.1	9.5	1.6	1.6	10.7	11.1	23.8
1100-1200	Pro	2.3	42.3	20.4	2.3	3.9	18.1	3.0	3.0	0.3	4.3
	Ocp	1.0	1.5	2.1	2.0	10.1	1.6	1.5	11.5	11.6	24.1
1200-1300	Pro	1.6	44.4	19.1	2.5	3.8	17.8	3.8	3.2	0.3	3.5
	Ocp	1.1	1.5	2.1	4.9	10.6	1.7	1.4	17.7	13.2	23.4
1300-1400	Pro	2.4	38.9	21.7	1.7	4.6	18.2	3.8	4.3	0.4	4.0
	Ocp	1.1	1.5	2.1	3.4	9.5	1.7	1.3	14.4	11.3	26.4
1400-1500	Pro	2.3	42.3	20.6	1.8	4.4	16.7	4.0	3.7	0.2	3.9
	Ocp	1.1	1.5	2.1	2.8	9.7	1.6	1.3	10.6	11.4	24.1
1500-1600	Pro	1.3	45.5	20.6	2.6	4.3	15.4	2.4	4.0	0.3	3.7
	Ocp	1.1	1.5	2.2	6.5	10.6	1.7	1.5	15.9	18.0	23.4
1600-1700	Pro	2.1	47.3	17.5	2.4	3.6	15.5	2.4	4.8	0.3	4.2
	Ocp	1.1	1.5	2.1	4.6	12.4	1.8	1.2	10.3	19.9	36.9
1700-1800	Pro	4.0	48.4	20.1	1.5	4.9	10.3	1.7	4.4	0.3	4.4
	Ocp	1.1	1.5	2.3	3.0	13.2	1.6	1.3	17.4	23.8	50.4
1800-1900	Pro	3.9	49.6	26.1	0.7	4.8	7.1	0.5	3.3	0.3	3.7
	Ocp	1.1	1.5	2.0	2.7	14.3	1.6	1.1	20.2	24.8	65.5
1900-2000	Pro	3.2	53.2	25.3	0.2	5.4	4.1	0.9	2.7	0.3	4.7
	Ocp	1.1	1.5	1.9	2.5	12.6	1.6	1.6	13.3	17.8	46.4
2000-2100	Pro	2.8	46.2	34.3	0.2	5.5	3.2	0.5	1.2	0.4	5.7
	Ocp	1.0	1.5	1.8	1.9	10.8	1.4	1.5	12.9	8.1	27.6
2100-2200	Pro	1.9	41.6	38.9	0.1	6.6	2.7	0.5	1.3	0.3	6.0
	Ocp	1.2	1.6	1.9	1.0	9.2	1.6	1.6	9.3	8.8	27.1
2200-2300	Pro	3.1	39.2	40.6	0.1	7.4	2.2	0.3	1.2	0.3	5.7
	Ocp	1.1	1.5	1.8	3.0	9.6	1.5	1.2	6.3	8.6	25.6
16 hours	Pro	2.7	45.6	23.4	1.6	4.7	11.6	2.2	3.5	0.3	4.4
	Ocp	1.1	1.5	2.0	4.6	11.6	1.7	1.4	14.3	16.6	37.8

**Legend**

- Pro.** Proportion of vehicles in % (Sum may not add up to 100% due to figure rounding)  
**Ocp.** Average occupancy of vehicles  
**M & H** Medium and Heavy